

TOTAL PARKING SOLUTIONS



PARKMATIC

COMPUTERISED ROBOTIC HYDRAULIC PARKING SYSTEM DRIVE
ON TRANSFER TROLLEY TO CELL AUTOMATICALLY

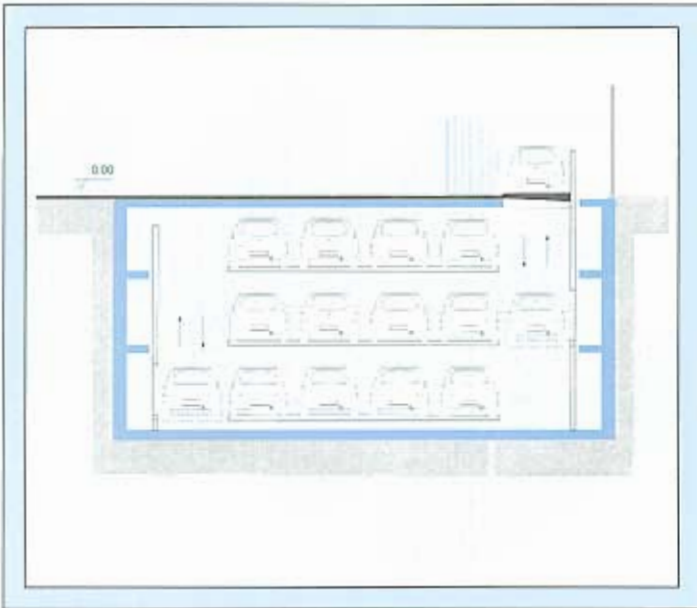
INDEPENDENT SELF SUPPORTING MODULAR STRUCTURE

(A CD-Rom incorporating a 34 page brochure and 8 minute video is available on request)

PARKMATIC

PARKMATIC is an automatic electro-hydraulic parking system with computerised robotic functions enabling optimum use of available space at all levels. Driver free mechanical operation.

The modular composition of the system, together with the different cell sizes, makes it extremely versatile for all types of car or situation. The system can be used to construct underground car parks in urban courtyards with the aim of achieving an economical concentration of car parks in a limited area, reducing management costs, improving user safety and speeding up car transfer. The system requires at least two levels for rotation of the parking cells.

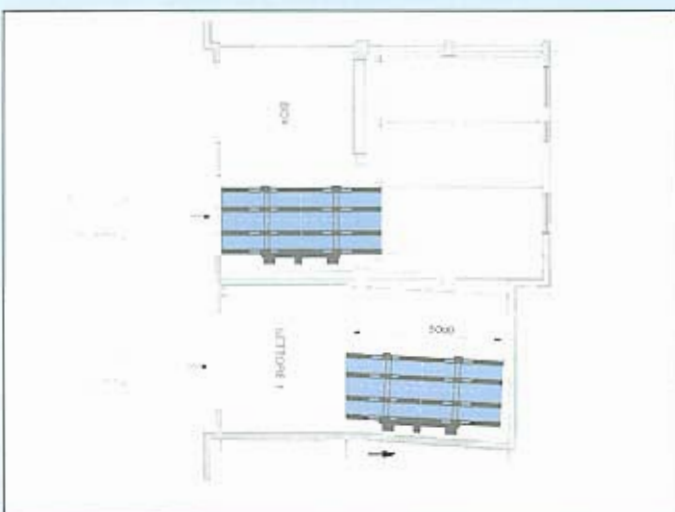


The "opposing stalls" system is characterised by a series of platforms on which the cars are placed one above the other. These are arranged in special stalls laterally to a lift.

The platform is deposited (or picked up) by the lift which moves between the various parking levels. The parking capacity consists of two cars per level and the total number of car-spaces is therefore proportional to the number of underground levels.



Fifteen car-space module. This solution enables 15 cars to be stored on four underground levels with an available area of 100 square metres.



The PARKMATIC parking system can meet the most diversified parking needs from simple solutions with five car spaces to multilevel above and below ground structures with hundreds of parking spaces.

The brochures and video show only a few solutions and are intended to give an indication of the endless possibilities we can develop.