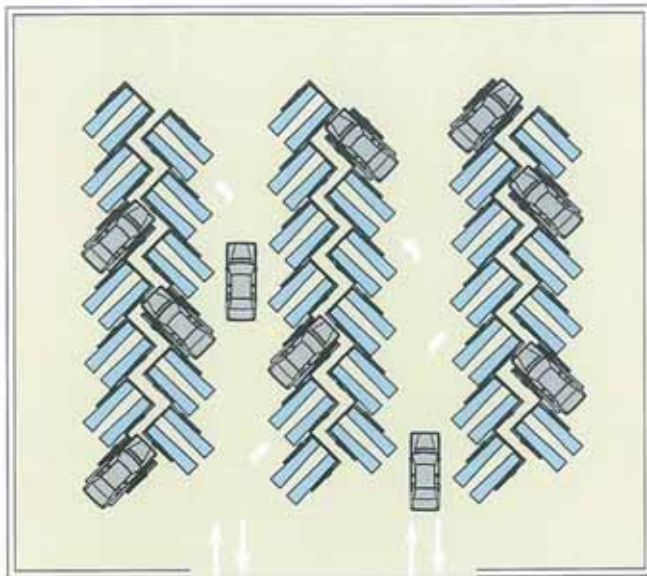
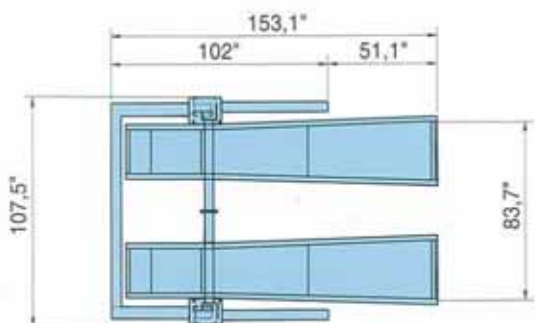
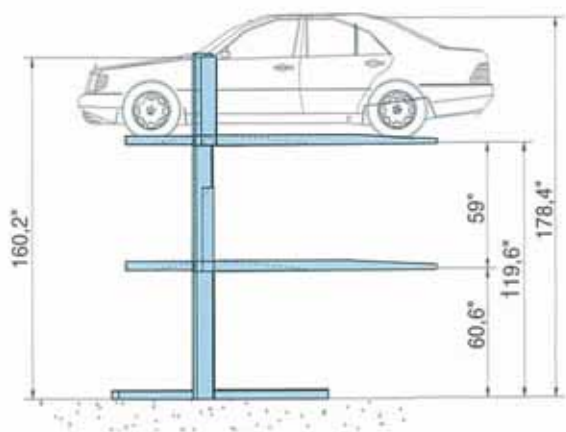


OPTIBER



TRIPARK
MULTIPARK

TRIPARK





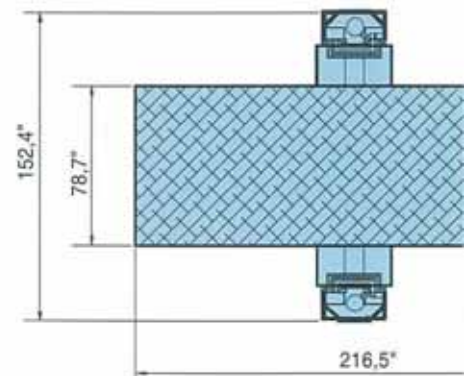
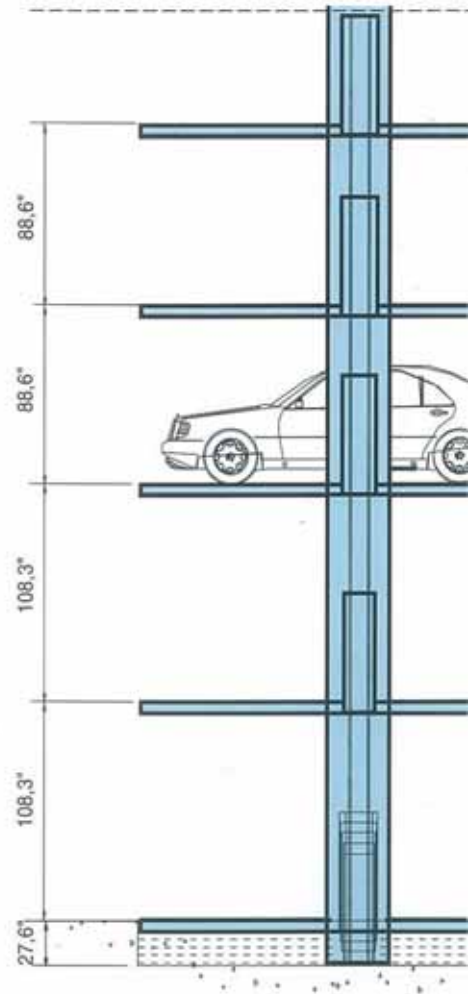
Parking system for three cars, one on top of another

Conceived and designed to make the best use of the vertical space available, **TRIPARK** is defined as being "car dependent" because to take out one car it is always necessary to remove the vehicles beneath, if any.

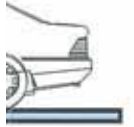


MULTIPARK

Special version
of MULTIPARK 10 for
"Isuzu Auto Center"
Bangkok, Thailand



PARKING
No problem



problem?



Car-dependent parking system, can be used to store four or more cars one on top of the other

TRIPARK

Made according to traditional OMER quality criteria, **TRIPARK** is activated by an electro-hydraulic system and is composed of a self-bearing metal framework, requiring no anchorages of any kind, and two mobile platforms that permit parking three cars in a height of just 14,7".

The platform moves in safety as it is controlled by a unit equipped with a button strip that is only active with the operator present and can be positioned in the best place for handy use.

The extraordinary care taken over the choice of materials, as well as their subsequent treatments, ensures a considerably long service life for the product whether installed in a closed room or outdoors. At the user's request, **TRIPARK** can be supplied with its metal framework galvanized, with a view to use in particularly adverse climatic conditions.

TRIPARK is equipped with specific features designed to protect the safety of users and equipment from any accidental events and/or incorrect operations: an automatic hydraulic device ensures mechanical anchorage of the raised platforms to the load-bearing framework. Special parachute valves control the correct operation of the hydraulic circuit, preventing accidental lowering caused by sudden of oil pressure, while a system of electric photo-cells ensures protection against improper lowering operations.

TRIPARK's manifest vocation to provide an effective solution to broad-ranging parking problems was foreseen by OMER, who in this sense are able to develop specific projects for combined installations envisaging a single control unit for all the lifts.

TRIPARK, besides being patented, is certified by the German TUV and type-approved with the **CE mark**.

TRIPARK 20								
Capacity	Motors	Weight	Lifting time empty	Lifting time loaded	Length	Width	Lifting height	Tripark height
LB	kW	LB	sec	sec	inch	inch	inch	inch
4400 (per platform)	Three-phase 230/400V 1.5 kW (2 hp)	3900	50	45	153,1"	107,5"	60,6" + 59"	160,2"

MULTIPARK

Car dependent parking system, can be used to store four or more cars, one on top of another, composed of a variable number of platforms sliding along two guide columns.

MULTIPARK has electro-hydraulic operation and movements are made via a driving platform pushed by rams located in the guide columns. It is necessary to bear in mind that, depending on the number of platforms installed, there must be an adequate housing to locate them in the "fully closed" position.

Analogously with **TRIPARK**, and this is its technical development, **MULTIPARK** is made in conformity with the most traditional OMER quality criteria and is equipped with all the mechanical, hydraulic and electrical safety devices distinguishing **TRIPARK**.

MULTIPARK is also patented, certified by the German TUV and type-approved with the **CE mark**.

MULTIPARK					
Capacity	Motors	Weight	Length	Width	Net gap between platforms
LB	kW	LB	inch	inch	inch
4400 (per platform)	Three-phase 230/400V 50Hz	Variable depending on the no. of platforms	204,7" (platform)	86,6" (platform)	60,6" / 82,7"



O.M.E.R. Spa
Via G. Galilei, 20 z.l.
30035 Mirano Venezia
ITALY
Tel. 041-5700303 r.a.
Fax 041-5700273
Telex 420109 OMER I

O.M.E.R. USA Inc.
FLORIDA OFFICE:
800/342.0076
Fax 954/791.4903

